

KVARNER BAY COASTAL PILOTAGE

Guidance notes

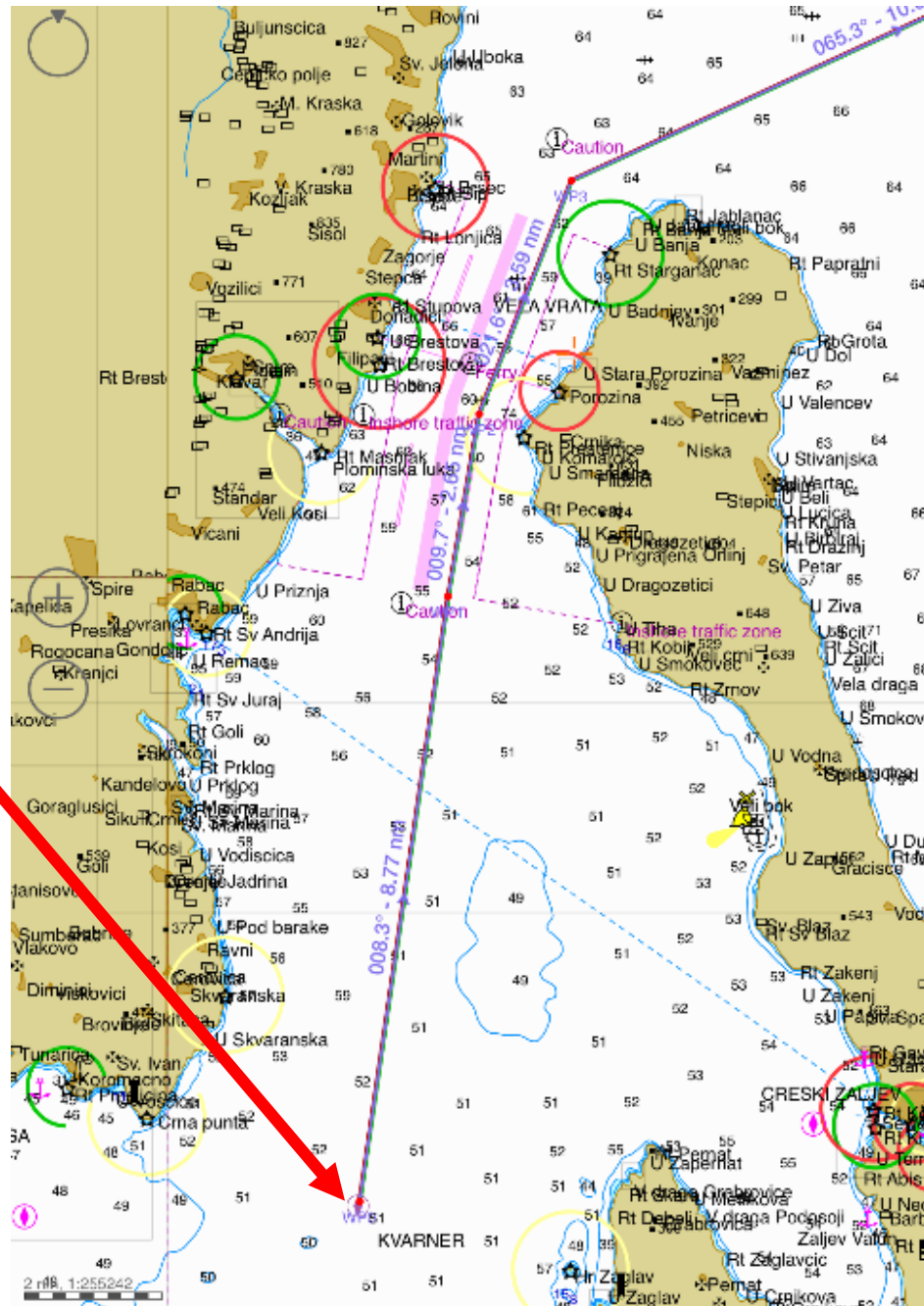


REGULATIONS

- ▶ Coastal Pilotage is mandatory for inbound and outbound vessels carrying dangerous cargo in bulk as specified in MARPOL Annex 2, Oil tankers and Gas carriers with Gross Tonnage 40,000 and above
- ▶ For terminals located in Kvarner Bay, Coastal PBS is located at the following position:
Lat: 44° 56.2'N; Long: 014° 13.0'E (see details on following slide)



COASTAL PILOT STATION
LAT: 44° 56.2'N
LONG: 014° 13.0'E



REPORTING

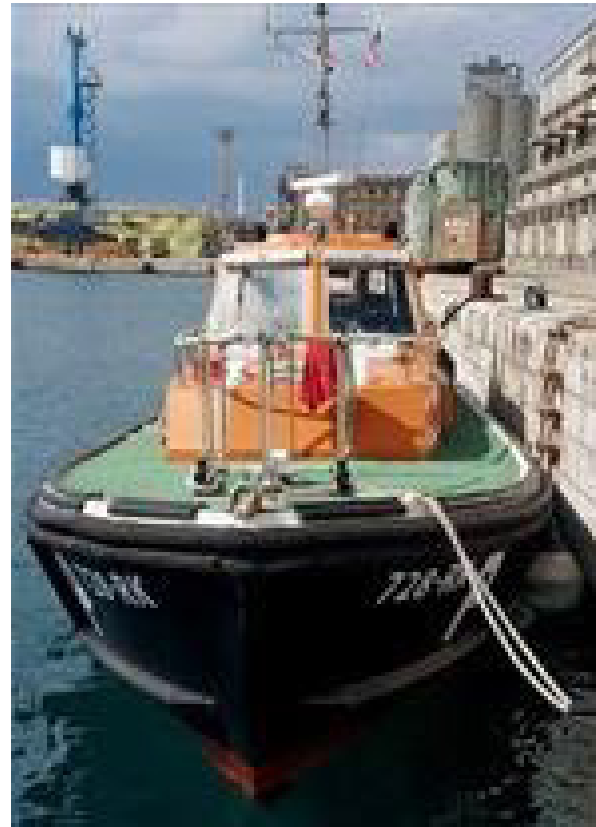
- ▶ Vessel Masters are requested to send 48/24/12/6 hours ETA notices prior arrival at Coastal PBS addressed as follows:
 - To: operations@cropilot.hr
 - Cc: Appointed Agent
- ▶ Report must include following info:
 - AA Vessel name/ Call sign:
 - BB Estimated draft on arrival fore/aft:
 - CC ETA to Coastal PBS (UTC and LT):
 - DD As per Company Policy, is the vessel permitted to anchor at winds >30kt:
 - EE Remarks (if any):
- ▶ 2 hrs prior arrival at Coastal PBS call Rijeka Pilots at VHF Ch.08 in order to confirm arrival time and boarding arrangement



BOARDING ARRANGEMENT

- ▶ Normally, depending on weather conditions, requested boarding speed is around 6kt and pilot ladder/combination adjusted to 1 metre above sea level
- ▶ Close to the Coastal PBS, the Pilot will call the vessel on VHF Ch.08 from the pilot boat to confirm boarding arrangement and depending on prevailing weather conditions may request Master to make good lee to enable safer boarding

PILOT BOATS



**Cro
Pilot**